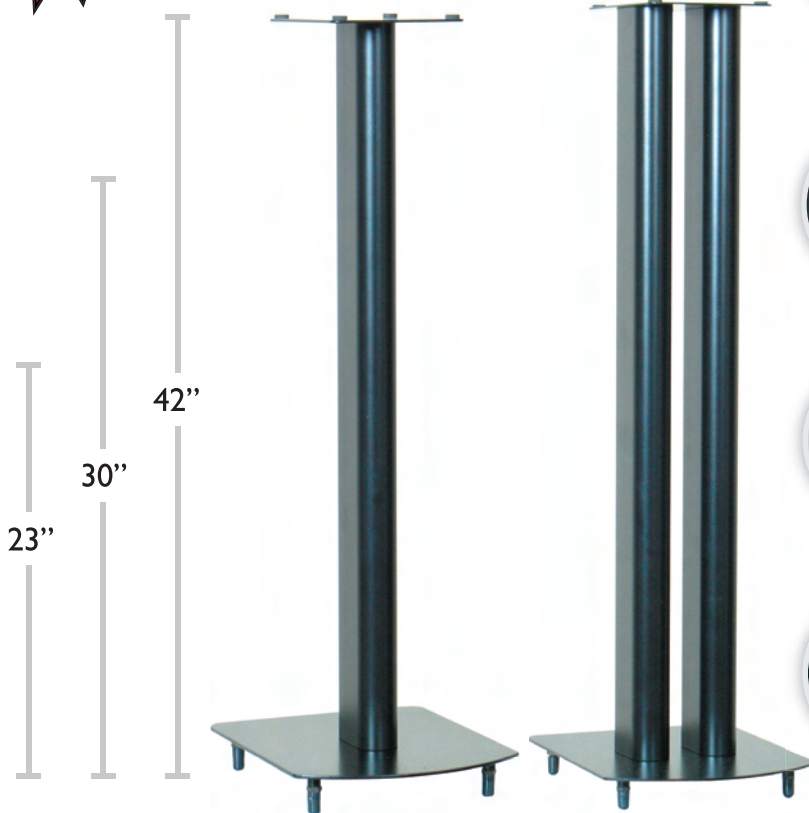


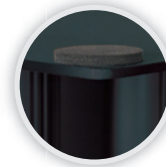
SS1/SS2 Series

Loudspeaker Stand

Every loudspeaker's ability to produce music optimally is enhanced when a solid contact to the floor is established. The Sonora SSI and SS2 Series of metal speaker stands provides stability and prevents unnecessary vibrations or movement. The SS2 series, while similar to the SSI series, features double posts to give increased stability for heavier loudspeakers. Both series come in three heights 23", 30", 42", making them ideal for all front and rear loudspeaker requirements.



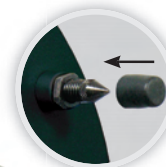
EASY ASSEMBLY: Each post is secured into place using two screws on both the top and bottom plate, reducing assembly time to minutes.



ISOLATION PADS: All models are supplied with isolation pads, so that loudspeakers can be placed on a secure, non-slip, vibration-free surface.



CABLE MANAGEMENT: Posts serve as cable management conduits.



CONVENIENT SPIKE CAPS: The SSI and SS2 series features adjustable spikes for carpet applications, while convenient rubber spike caps protect wood floors.

Model	Height mm / inches	Bottom Plate mm / inches	Top Plate mm / inches
SSI-23	584 / 23.0	241 x 305 / 8.75 x 10.5	127 x 165 / 5.0 x 6.5
SSI-30	762 / 30.0	241 x 305 / 8.75 x 10.5	27 x 165 / 5.0 x 6.5
SSI-42	1067 / 42.0	241 x 305 / 8.75 x 10.5	27 x 165 / 5.0 x 6.5
SS2-23	584 / 23.0	241 x 305 / 8.75 x 10.5	27 x 165 / 5.0 x 6.5
SS2-30	762 / 30.0	241 x 305 / 8.75 x 10.5	27 x 165 / 5.0 x 6.5
SS2-42	1067 / 42.0	241 x 305 / 8.75 x 10.5	27 x 165 / 5.0 x 6.5

SS1/SS2