

# QP Conduit Series

## Wire Conduit

Optional accessories  
10 each/pkg

QPI



INSIDE CORNER

QPO



OUTSIDE CORNER

QPL



90°

QPC

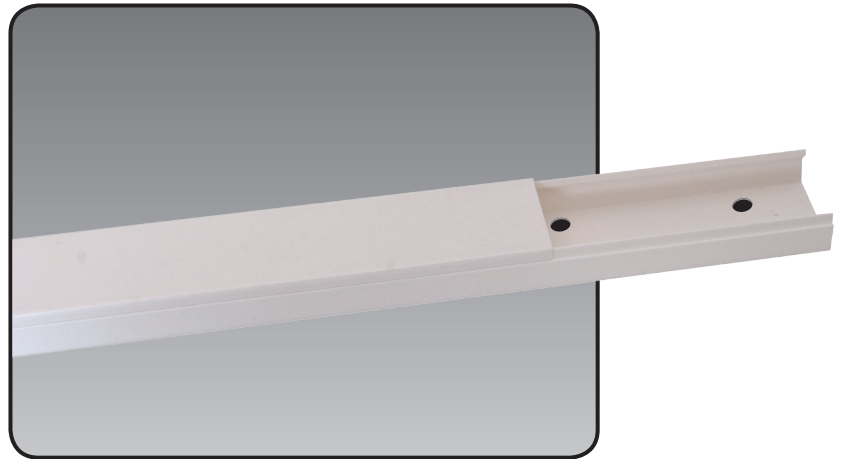


COUPLER

QPT



T-BRACKET

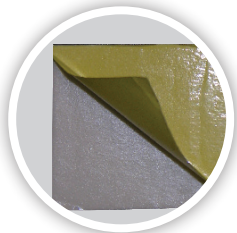
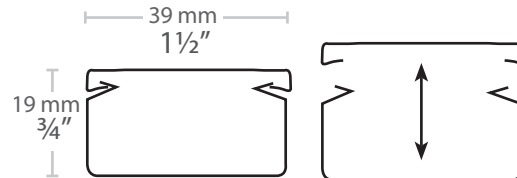


QP1939

19 mm X 39 mm X 2 m

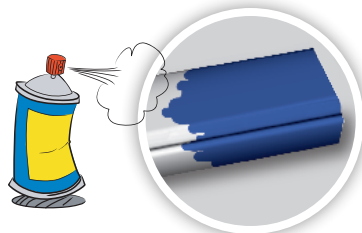
3/4" X 1 1/2" X 6.6'

Sold in MC 20 units

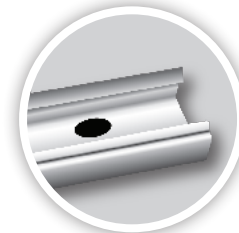


PRE-APPLIED  
TWO SIDED TAPE:

Simply peel and stick into place



PAINTABLE SURFACE



PRE-DRILLED HOLES:

Reinforce holding power with screws when working on difficult surfaces or when fully loading conduit.

QP Series

distributed by Daveco (514) 738-2112 info@davecohifi.com

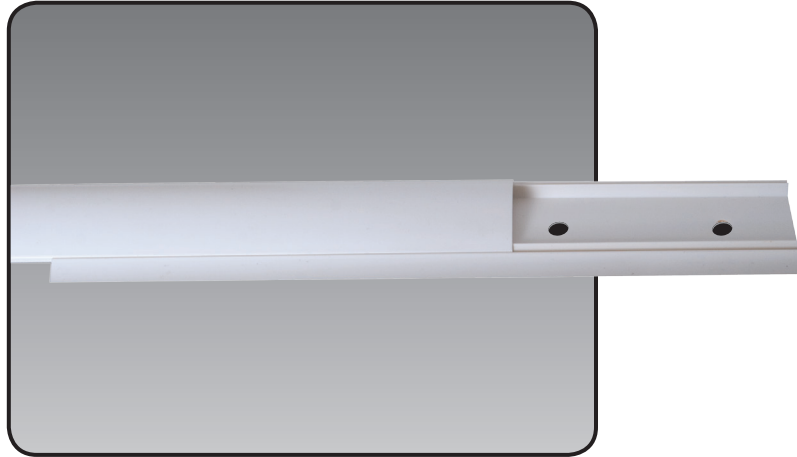
DNPR317

www.davecohifi.com

OMAGE®

# QP Conduit Series

## Wire Conduit

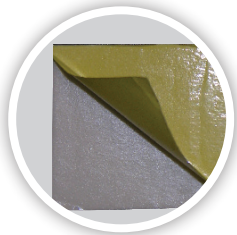
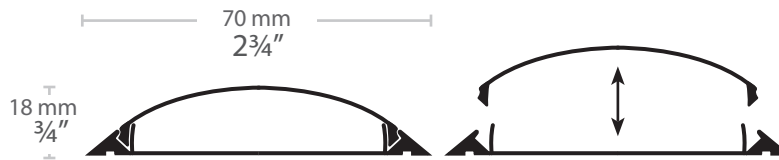


**QP1870**

19 mm X 39 mm X 2 m

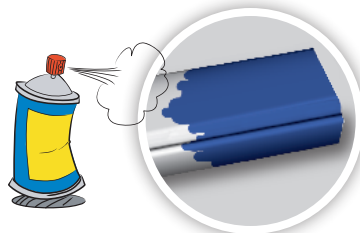
$\frac{3}{4}$ " X  $1\frac{1}{2}$ " X 6.6'

Sold in MC 20 units

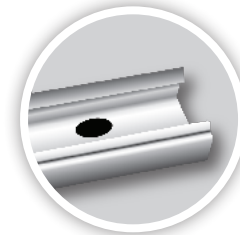


**PRE-APPLIED  
TWO SIDED TAPE:**

Simply peel and stick into place



**PAINTABLE SURFACE**



**PRE-DRILLED HOLES:**

Reinforce holding power with screws  
when working on difficult surfaces or  
when fully loading conduit.

**QP Series**

distributed by Daveco (514) 738-2112 info@davecohifi.com

DNPR317

[www.davecohifi.com](http://www.davecohifi.com)

**OMAGE®**