



SR24-WSK 81"

SR42-WSK Includes
 1 x SR42
 2 x SA-S5U-44
 7 x SA-S2U-22
 9 x SA-B2U



SR27-WSK 55"

SR27-WSK Includes
 1 x SR27
 5 x SA-S2U-22
 5 x SA-B2U



SR18-WSK 39"

SR18-WSK Includes
 1 x SR18
 3 x SA-S2U-22
 3 x SA-B2U



SA-S2U-22

- 2U shelf
- 400mm depth
- Max weight: **22kg/48.5lbs**



SA-S5U-44

- 5U shelf
- 500mm depth
- Max weight: **44kg/97lbs**

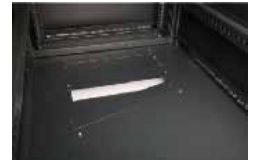


SA-B2U

- 19" wide
- 2U
- Front or back panel



Top mounted cooling fans keeps components at the right temperature



Removable bottom cable management panels

- Reversible lockable temper tinted glass front
- Vented cabinet in all directions for improved air circulation
- Back panel lockable for security
- Quick release sides and back panels allow complete and total access to components and wires
- 19" standard installation
- Castors and adjustable feet supplied
- All mounting screws are provided in black



Lockable Door



Grounded Chassis

Model	Capacity	Total Load Bearing Kg/lbs	Dimensions Width mm/in	Dimensions Depth mm/in	Dimensions Height mm/in	Included	Weight Kg/lbs
SR18	U18	800/1763	600/23.5	600/23.5	992/39	2 X Cooling fans, 4 X Feet and 4 X Casters 3 x SA-S2U-22, 3 x SA-B2U	60/123
SR27	U27	800/1763	600/23.5	600/23.5	1303/51.5	2 X Cooling fans, 4 X Feet and 4 X Casters 5 x SA-S2U-22, 5 x SA-B2U	70/154
SR42	U42	800/1763	600/23.5	600/23.5	1970/77.5	2 X Cooling fans, 4 X Feet and 4 X Casters 2 x SA-S5U-44, 7 x SA-S2U-22, 9 x SA-B2U	110/242



SR42 81"



SR27 55"



SR18 39"



Top mounted cooling fans keeps components from overheating



Removable bottom cable management panels



Grounded Chassis



Lockable Door

- Reversible lockable tinted tempered glass front
- Cabinet vented in all directions for improved air circulation
- Side and back panel are lockable for full security
- Quick release sides and back panels allow easy and complete access to components and wires
- 19" standard installation
- Castors and adjustable feet supplied

All models available either knockdown or fully assembled

Model	Capacity	Total Load Bearing Kg/lbs	Dimensions Width mm/in	Dimensions Depth mm/in	Dimensions Height mm/in	Included	Weight Kg/lbs
SR18	U18	800/1763	600/23.5	600/23.5	992/39	2 X Cooling fans, 4 X Feet and 4 X Casters	60/123
SR27	U27	800/1763	600/23.5	600/23.5	1303/51.5	2 X Cooling fans, 4 X Feet and 4 X Casters	70/154
SR42	U42	800/1763	600/23.5	600/23.5	1970/77.5	2 X Cooling fans, 4 X Feet and 4 X Casters	110/242



SR12W 25"



Optional:
Top mounted cooling fans keeps components from overheating



Removable bottom cable management panels



Grounded Chassis



Lockable Door

- Reversible lockable tinted temper glass front
- Cabinet vented in all directions for improved air circulation
- Sides and back panel are lockable for full security
- Quick release sides and back panels allow easy and complete access to components and wires
- 19" standard installation

Model	Capacity	Total Load Bearing Kg/lbs	Dimensions Width mm/in	Dimensions Depth mm/in	Dimensions Height mm/in	Weight Kg/lbs
SR12W	U12	60/132	600/23.5	600/23.5	650/23.5	29/64



SA-S2U-22

- Fix vented shelf 2U
- 400mm depth
- Max weight **22kg/48.5lbs**



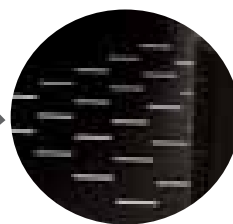
SA-S5U-33

- Fix vented shelf 5U
- 500mm depth
- Max weight **33kg/72.5lbs**



SA-S5U-44

- Fix vented shelf 5U
- 500mm depth
- Max weight **44kg/97lbs**



Vented shelf improves air flow circulation to help reduce components from over heating

4 Post Vented Shelf



SA-SC3

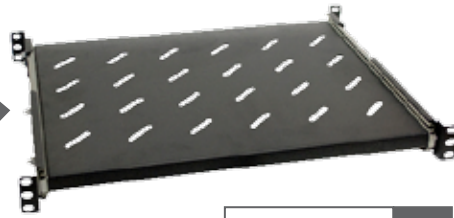
- Fix shelf
- 300mm depth
- Front and back mount
- Max weight **20kg/44lbs**



4 Post Rack Shelves designed to support heavier weights



Fully retractable easy glide/ball bearing shelf



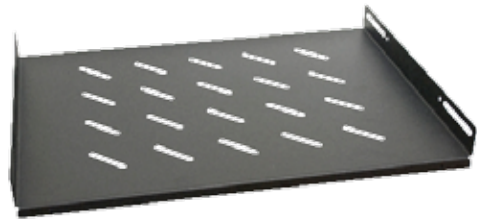
SA-SS

- Sliding shelf
- yy to xx mm depth
- Front and back mounts
- Max weight **30kg/66lbs**

Side Mounted Vented Shelf



Stationary high load capacity for heavier rack items



SA-SSM

- Fix shelf
- 400mm depth
- Side mount
- Max weight **40kg/88lbs**

4 Post Sliding Shelf



SA-F2

- **1U** cooling fans
- 2 fans
- Front and back mount

Rack mount fan trays are designed to provide cooling to the rack mount cabinets especially around equipment that run hot. Maybe installed anywhere inside the cabinet using only 1U of space.



SA-F4

- **1U** cooling fans
- 4 fans
- Front and back mount



SA-FR2

- 1U Casing Fans
- 2 fans
- On/Off switch



SA-FR4

- 1U Casing Fans
- 4 fans
- On/Off switch

Blank Panels



SA-B

- 1U
- Front or back blank panel spacer



SA-B2U

- 2U
- Front or back blank panel spacer



SA-BP

- 1U
- Front or back slot type panel spacer
- Increased ventilation



SA-BP2U

- 2U
- Front or back slot type panel spacer
- Increased ventilation

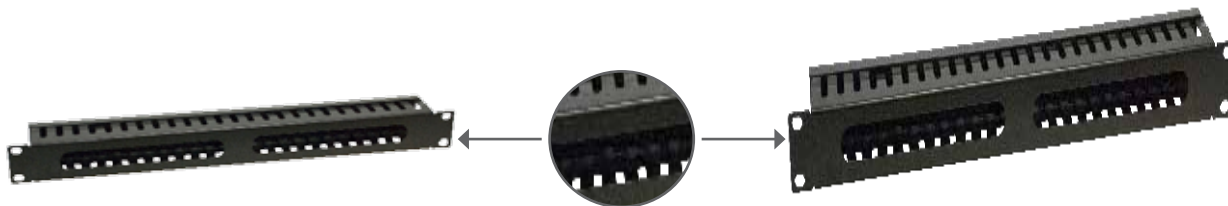


SA-BR

- 1U
- Brush type cable management panel

SA-BR2U

- 2U
- Brush type cable management panel



SA-MM

- 1U
- Metal cable management panel

SA-MM2U

- 2U
- Metal cable management panel



SA-OM2U

- 2U
- Open metal cable management spacer



SA-LD2U

- 2U
- Lockable drawer



SA-KB

- Sliding keyboard shelf
- 400mm depth
- Front mount
- Max weight 10kg/22lbs



SA-TC

- Temperature controller
- Controls 2 different sets of fans



SA-CAT5

- 24 port
- UTP Cat5E Patch panel



SA-M6

- M6 screws, for quick assembly of accessories
- 10/bag